



# LINDDNA

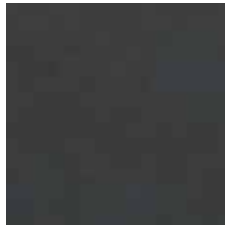
COLOUR GUIDE FALL 2017  
LINDDNA.COM



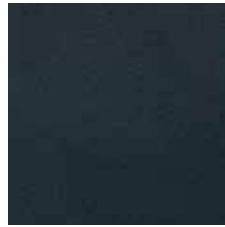
NUPO metallic



NUPO light grey



NUPO anthracite



NUPO black



NUPO brown



NUPO nature



NUPO sand



NUPO army green



NUPO pastel green



NUPO light blue



NUPO dark blue



NUPO purple



NEW NUPO rose

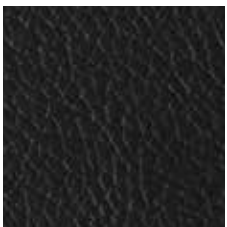


NUPO red

NUPO



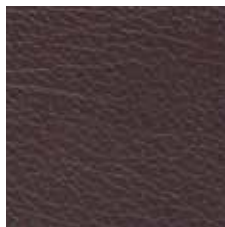
NUPO rose



BULL black



BULL nature

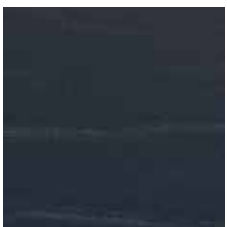


BULL brown

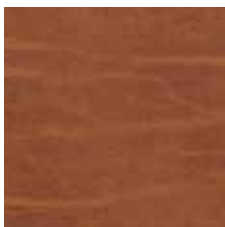


BULL white

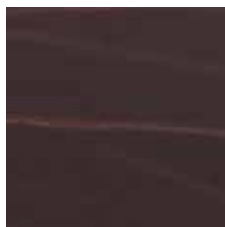
BULL / BUFFALO



BUFFALO black



BUFFALO nature



BUFFALO brown



BULL red



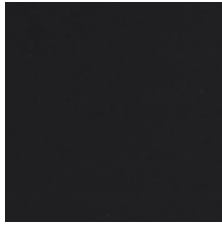
BULL red



NEW SOFTBUCK cool grey



SOFTBUCK dark grey



SOFTBUCK black



SOFTBUCK navy blue



TABU pastel blue



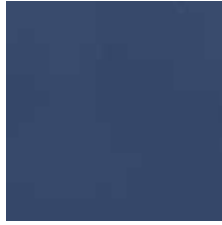
CROCO silver-black



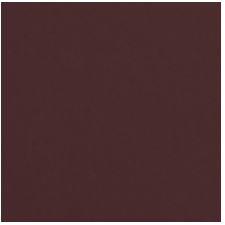
SOFTBUCK dark green



NEW SOFTBUCK pastel green



NEW SOFTBUCK navy blue



SOFTBUCK bordeaux

SOFTBUCK



CROCO cognac



LACE black



NEW TABU black



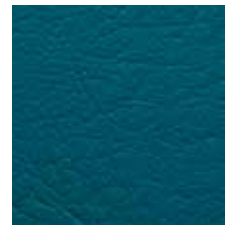
NEW TABU anthracite



NEW TABU light grey



NEW TABU navy blue



NEW TABU petrol



NEW TABU pastel blue



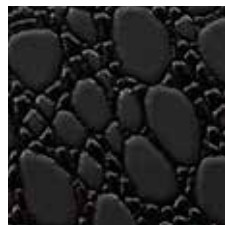
NEW CROCO cognac



NEW CROCO black



NEW CROCO silver-black



NEW LACE black

TABU  
CROCO  
LACE

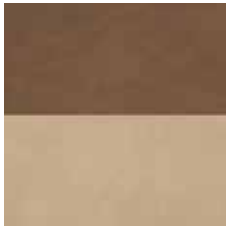


TABU petrol





CLOUD black  
NUPO metallic



CLOUD brown  
NUPO sand



CLOUD anthracite  
NUPO pastel green



NEW NUPO rose  
NUPO metallic



NUPO anthracite  
NUPO light grey



NUPO dark blue  
NUPO black



NUPO light blue  
NUPO light grey



NUPO purple  
NUPO black



NUPO army green  
NUPO nature



BULL black  
BULL brown



BUFFALO black  
BUFFALO nature



T. BUCK silver  
T. BUCK pearl



T. BUCK bronze  
T. BUCK gold



NEW WOOD oak  
SOFT BULL black



NEW WOOD walnut  
SOFT BULL black



WOOD oak / SOFT BULL black

BREAKING NEWS

# DOUBLE LEATHER COLOURS