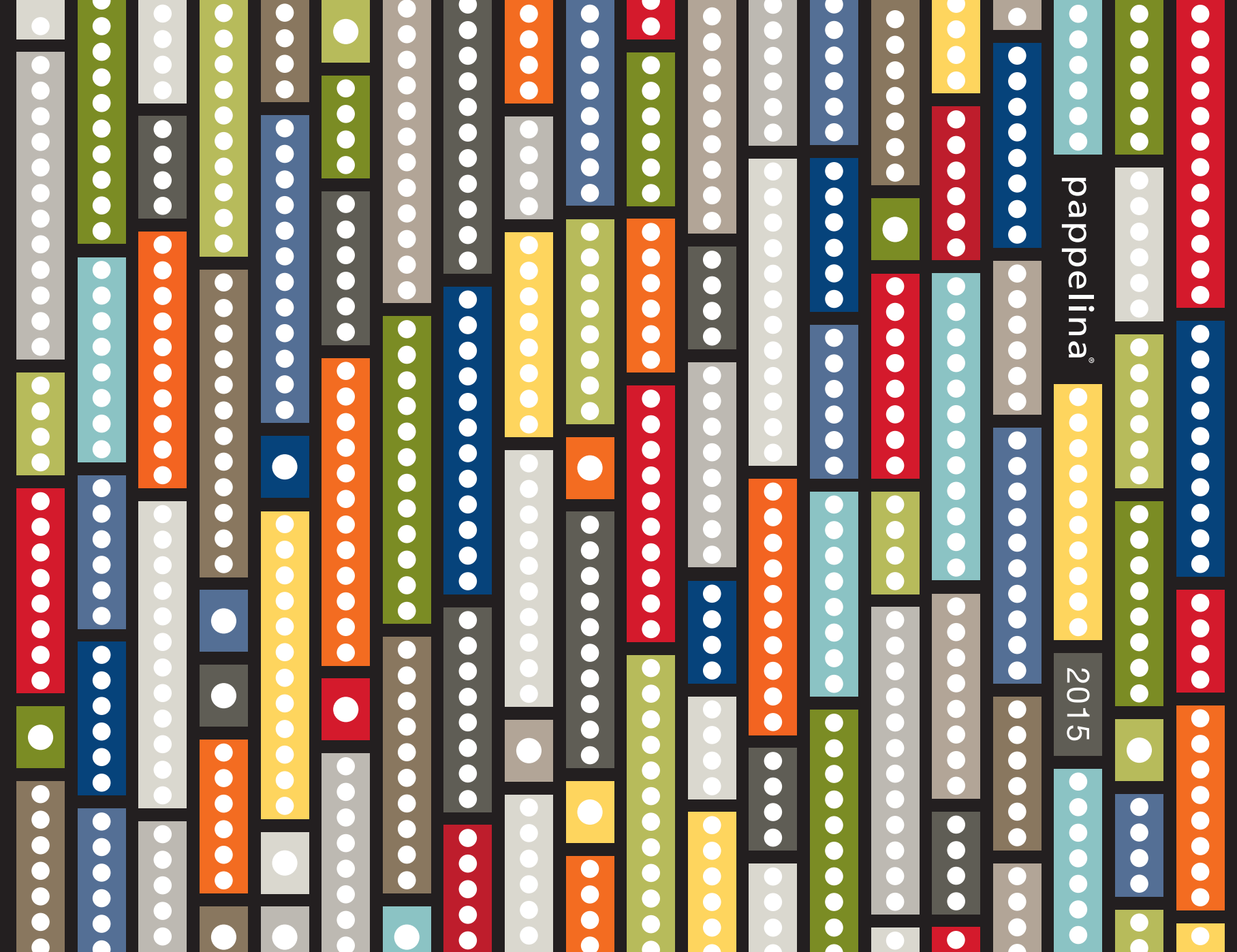


pappalina®

2015







## CRAFTED WITH LOVE AND PRIDE IN SWEDEN

To us, even the smallest detail is important – from the choice of material and pattern, to the weaving and the finish. And everything we do, we do by hand. Each Pappelina rug represents a piece of Swedish craftsmanship, from start to finish, brought to life through a close interplay between design and weave. But we're not just about colourful perfectionism, we want to bring to your day a burst of high-quality joy! We like what we do, what we make – our hope is that you do too.

*P.S. We use nothing but Swedish manufactured, environmentally certified plastic that meets the requirements set by REACH™.*



## MIT LIEBE UND STOLZ IN SCHWEDEN HERGESTELLT

Uns ist auch das kleinste Detail wichtig. Vom Material über das Muster und das Weben bis hin zum Finish. Und alles was wir tun, tun wir von Hand. Jeder Pappelina-Teppich ist ein Stück schwedische Handwerkskunst, ermöglicht durch enge Abstimmung von Design und Weberei. Aber wir sind nicht nur farbenfrohe Perfektionisten: Wir wollen Freude in Ihren Tag bringen! Wir lieben, was wir tun und was wir herstellen. Und wir hoffen, dieser Funke springt auf Sie über!

*P.S. Wir verwenden ausschließlich in Schweden hergestellten, nach Umweltkriterien geprüften und zertifizierten Kunststoff, der die REACH™-Kriterien erfüllt.*





## IT ALL BEGAN 16 YEARS AGO

I can still recall the feeling I had when I first found a stock of plastic ribbons from the 60's at a small weavery here in Dalarna. I had just begun weaving my linen rugs and was looking for my own form of expression, one that combined high-quality craftsmanship with modern design and functionality. Suddenly, with those ribbons, a whole new world opened up to me!

Along with the craftsmen of the weavery, I began experimenting with the ribbons, developing new colours, techniques, patterns – elevating the classic plastic rug of Sweden to a whole new level. Twice as thick and with bold-coloured patterns, the Pappelina rug began to take the world by storm. And that's how we are where we are today. Pappelina is growing, yet at our core remains small-scale local Dalarna craftsmanship. It is only our market that has grown to be global.

*Lina Rickardsson*



The VERA runner photographed at Shibuya Crossing in Tokyo, Japan 2005

## ALLES BEGANN VOR 16 JAHREN

Ich kann mich an das Gefühl erinnern, als wäre es gestern gewesen: als ich zum ersten mal in einer kleinen Weberei in der Provinz Dalarna einen Vorrat von Plastikbändern aus den 60er Jahren fand. Gerade hatte ich meine ersten Leinenteppiche gemacht. Ich suchte noch nach meiner eigenen Ausdrucksform – einer, die hochwertige Handwerkskunst mit modernem Design und mit hoher Funktionalität verbindet. Und plötzlich – mit diesen Kunststoffbändern – lag eine völlig neue Welt vor mir!

Zusammen mit den anderen Webern begann ich, mit den Bändern zu experimentieren; neue Farben, Techniken, Muster zu entwickeln. Und damit auch, den klassischen schwedischen Kunststoffteppich auf eine ganz neue Ebene zu heben. Doppelt so dick und mit Mustern in kräftigen Farben, eroberten Pappelina-Teppiche die Welt im Sturm. So kamen wir dahin, wo wir jetzt sind: Wir sind gewachsen, aber unser Fundament bleibt regionale Handwerkskunst in kleinem Maßstab in Dalarna. Nur unsere Kunden kommen jetzt aus aller Welt.

*Lina Rickardsson*





2015

## NEUHEITEN

**ASTA** ist eine Hommage an den traditionellen Kunststoffläufer der 50er Jahre. Ich habe eine moderne Version mit größeren Formen und neuen Farben geschaffen, die in das moderne Heim passt.

**ANTS** hat sein Ursprung in einem Muster, welches ich letzten Sommer in New York sah. Ich habe das Muster in eine harmonische und elegante Kette umgewandelt, die am besten in sanften Farbtönen zur Geltung kommt.

**NOA** ist Vera's Cousin. Punkte machen uns einfach glücklich!

**FOLKE** ist ein farbenfroher Läufer, inspiriert durch die traditionellen Trachten und die typischen roten Holzhäuser, welche unsere Weberei in Dalarna umgeben.

*Lina Rickardsson*

## NEWS

**ASTA** is a flirtation with the traditional plastic rug using interchanging zones of colors and grey from the 50's. I updated the pattern to the present by magnifying and adding round, modern shapes.

**ANTS** has its origin in a pattern that I saw in New York last summer. I turned it into a harmonic and elegant chain that tones best with moderate colors.

**NOA** is a cousin of Vera. Dots make us happy. The more the merrier!

**FOLKE** is a colorful rug inspired by the folklore dresses and traditional red houses surrounding our weavery in Dalecarlia, Sweden.

*Lina Rickardsson*







CASTILLO DEL ROMERAL · GC · SPAIN

NEW  
2015



PALE ROSE



PALE TURQUOISE



MISTY BLUE



LIME



WARM GREY

## ASTA

- SIZES**  
70 x 90 cm  
70 x 180 cm  
70 x 270 cm  
70 x 360 cm
- 2 ¼' x 3'  
2 ¼' x 6'  
2 ¼' x 8 ¾'  
2 ¼' x 11 ¾'





ALTITUDE 1 750 METRES - GC - SPAIN



LIGHT PETROL · VANILLA



WARM GREY · VANILLA



PALE ORANGE · VANILLA

## ANTS

### SIZES

- 70 x 90 cm    2 ¼' x 3'
- 70 x 180 cm    2 ¼' x 6'
- 70 x 270 cm    2 ¼' x 8 ¾'
- 70 x 360 cm    2 ¼' x 11 ¾'

WARM GREY EDGINGS  
ON REVERSE SIDE







PALE TURQUOISE · VANILLA  
Warm grey stripe



WARM GREY · VANILLA  
Mustard stripe



CHARCOAL · WARM GREY  
Turquoise stripe

## NOA

### SIZES

70 x 50 cm	2 ¼' x 1 ¾'
70 x 90 cm	2 ¼' x 3'
70 x 150 cm	2 ¼' x 5'
70 x 250 cm	2 ¼' x 8 ¼'
70 x 350 cm	2 ¼' x 11 ½'



TWO-IN-ONE





BLUE



CHARCOAL



RED

## FOLKE

**SIZES**

70 x 100 cm	2 1/4' x 3 1/4'
70 x 200 cm	2 1/4' x 6 1/2'
70 x 300 cm	2 1/4' x 9 3/4'
70 x 400 cm	2 1/4' x 13 1/4'





BEIGE · LIGHT NOUGAT



WHITE



RED · CORAL RED



FOSSIL GREY · WARM GREY



CHARCOAL · WARM GREY



OLIVE · LIME



MISTY BLUE · ICE BLUE



BLACK

## MONO

### SIZES

85 x 160 cm 2 ¾' x 5 ¼'

85 x 260 cm 2 ¾' x 8 ½'

DOUBLE HEMMED EDGE

NEW  
SIZE





STYGGFORSEN • SWEDEN



WARM GREY • VANILLA



LIME • VANILLA



MISTY BLUE • VANILLA

NEW  
COLOUR



MUD • VANILLA



BLACK • VANILLA



LIGHT NOUGAT • VANILLA



CHARCOAL • VANILLA

NEW  
COLOUR



CORAL RED • VANILLA

## DUO

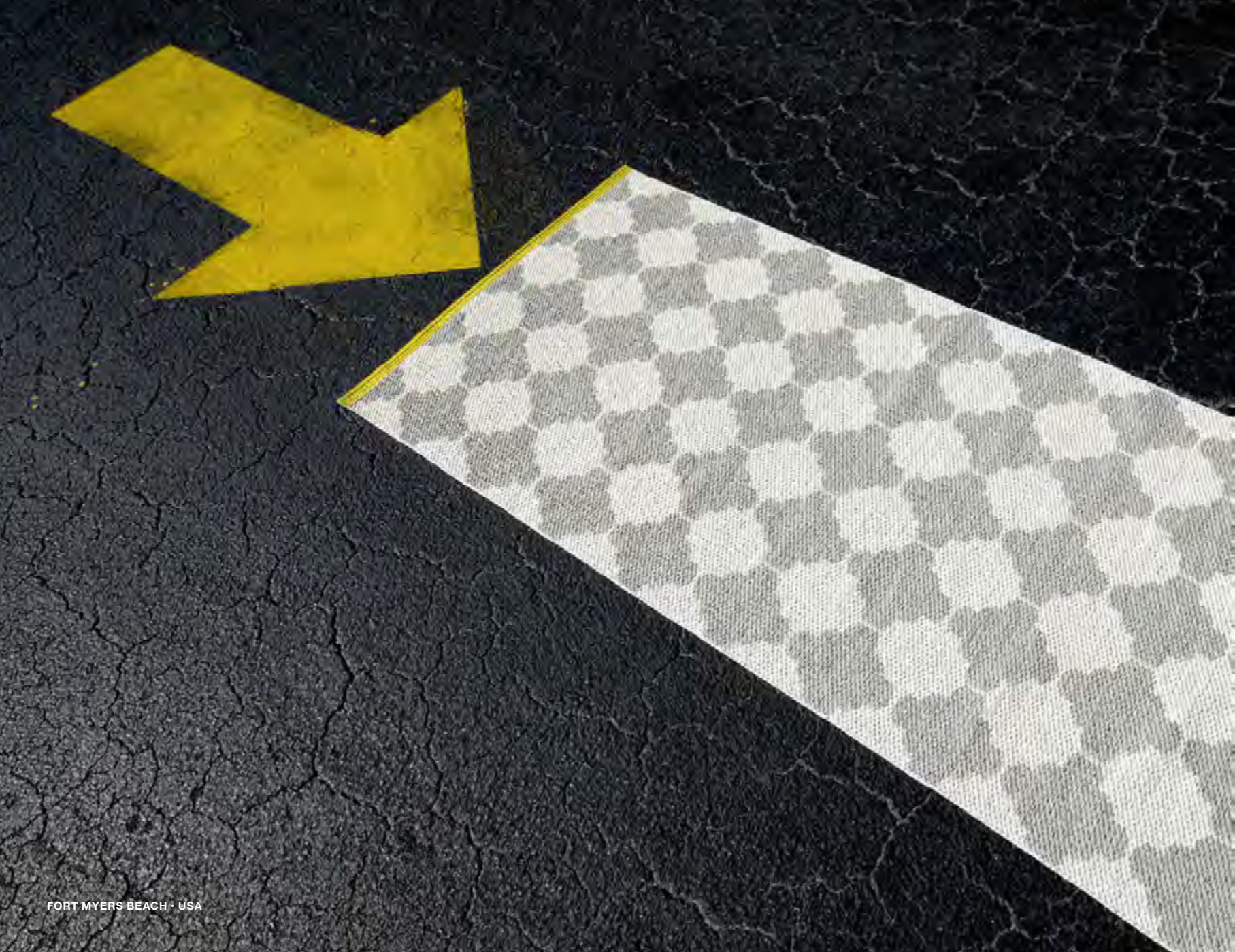
**SIZES**

- 85 x 160 cm    2 ¾' x 5 ¼'
- 85 x 260 cm    2 ¾' x 8 ½'

**DOUBLE HEMMED EDGE**

**NEW  
SIZE**





FORT MYERS BEACH · USA

# MARRE

- SIZES**
- 70 x 90 cm
  - 70 x 150 cm
  - 70 x 225 cm
  - 70 x 300 cm
  - 70 x 375 cm
- 
- 2 ¼' x 3'
  - 2 ¼' x 5'
  - 2 ¼' x 7 ½'
  - 2 ¼' x 9 ¼'
  - 2 ¼' x 12 ¼'



**CORAL RED · VANILLA**  
Mustard stripe



**WARM GREY · VANILLA**  
Mustard stripe



**MUD · VANILLA**  
Turquoise stripe



**BLACK · VANILLA**  
Coral red stripe



**LIME · VANILLA**  
Turquoise stripe







# HONEY

- SIZES**  
 70 x 100 cm  
 70 x 160 cm  
 70 x 225 cm  
 70 x 350 cm
- 2 ¼' x 3 ¼'  
 2 ¼' x 5 ¼'  
 2 ¼' x 7 ½'  
 2 ¼' x 11 ½'



WARM GREY · VANILLA



MUSTARD · VANILLA



PALE TURQUOISE · VANILLA



BLUE · VANILLA



CHARCOAL · VANILLA



BLACK · VANILLA







HOLENS GAMMELGÅRD • SWEDEN



SUMMER



MUD



PETROL



BLUE



MULTI



ORANGE

# MOLLY

**SIZES**

- 70 x 100 cm
- 70 x 200 cm
- 70 x 300 cm
- 70 x 400 cm

- 2 ¼' x 3 ¼'
- 2 ¼' x 6 ½'
- 2 ¼' x 9 ¾'
- 2 ¼' x 13 ¼'





MANHATTAN · NEW YORK

# VERA

**SIZES**

- 70 x 150 cm
- 70 x 225 cm
- 70 x 300 cm
- 70 x 375 cm
- 70 x 450 cm

- 2 ¼' x 5'
- 2 ¼' x 7 ½'
- 2 ¼' x 9 ¾'
- 2 ¼' x 12 ¼'
- 2 ¼' x 14 ¾'



YELLOW · VANILLA



ORANGE · VANILLA



RED · VANILLA



LIME · VANILLA



GREEN · VANILLA



TURQUOISE · VANILLA







SALT DESERT · USA



MUD · VANILLA



NOUGAT · VANILLA



BLUE · VANILLA



BLUEBERRY · VANILLA



FOSSIL GREY · VANILLA



WARM GREY · VANILLA



CHARCOAL · VANILLA



BLACK · VANILLA





ORANGE · VANILLA



RED · VANILLA



YELLOW · VANILLA



LIME · VANILLA



GREEN · VANILLA



TURQUOISE · VANILLA



BLUE · VANILLA



BLUEBERRY · VANILLA



FOSSIL GREY · VANILLA



WARM GREY · VANILLA



CHARCOAL · VANILLA



MUD · VANILLA



NOUGAT · VANILLA



BLACK · VANILLA

# VERA SMALL ONE

SIZES  
70 x 90 cm  
2 ¼' x 3'







BLACK · VANILLA



MUD · VANILLA



CHARCOAL · VANILLA

## BOB

### SIZES

70 x 120 cm	2 ¼' x 4'
70 x 200 cm	2 ¼' x 6 ½'
70 x 280 cm	2 ¼' x 9'
70 x 360 cm	2 ¼' x 11 ¾'





BLACK · VANILLA



WARM GREY · VANILLA



CORAL RED · VANILLA

## ODD

**SIZES**

- 70 x 100 cm    2 ¼' x 3 ¼'
- 70 x 200 cm    2 ¼' x 6 ½'
- 70 x 300 cm    2 ¼' x 9 ¾'
- 70 x 400 cm    2 ¼' x 13 ¼'





BLACK · VANILLA



WARM GREY · VANILLA



PALE ROSE · VANILLA

## ELLA

**SIZES**

- 70 x 150 cm    2 ¼' x 5'
- 70 x 225 cm    2 ¼' x 7 ½'
- 70 x 300 cm    2 ¼' x 9 ¾'
- 70 x 375 cm    2 ¼' x 12 ¼'
- 70 x 450 cm    2 ¼' x 14 ¾'







GREY · VANILLA



MUSTARD · VANILLA



BLACK · VANILLA

## VIVI

### SIZES

70 x 150 cm	2 ¼' x 5'
70 x 250 cm	2 ¼' x 8 ¼'
70 x 350 cm	2 ¼' x 11 ½'
70 x 450 cm	2 ¼' x 14 ¾'





LIGHT GREY · MUD · VANILLA



FOSSIL GREY · PALE ROSE · VANILLA



WARM GREY · MUSTARD · VANILLA

## VIGGO

**SIZES**

- 70 x 200 cm    2 ¼' x 6 ½'
- 70 x 300 cm    2 ¼' x 9 ¾'
- 70 x 400 cm    2 ¼' x 13 ¼'





# VIGGO ONE

**SIZES**

70 x 50 cm  
 70 x 150 cm  
 70 x 250 cm  
 70 x 350 cm  
 70 x 450 cm

2 ¼' x 1 ¾'  
 2 ¼' x 5'  
 2 ¼' x 8 ¼'  
 2 ¼' x 11 ½'  
 2 ¼' x 14 ¾'



RED · VANILLA



MUD · VANILLA



WARM GREY · VANILLA



BLACK · VANILLA



BLUEBERRY · VANILLA



WHITE METALLIC · WHITE



STONE METALLIC · VANILLA



MUD METALLIC · VANILLA



BLUE METALLIC · VANILLA



BLACK METALLIC · VANILLA

# VIGGO STAR

**SIZES**

70 x 50 cm  
 70 x 150 cm  
 70 x 250 cm  
 70 x 350 cm  
 70 x 450 cm

2 ¼' x 1 ¾'  
 2 ¼' x 5'  
 2 ¼' x 8 ¼'  
 2 ¼' x 11 ½'  
 2 ¼' x 14 ¾'

METALLIC SHINE







CAPE COD · USA



BLUEBERRY · VANILLA



WARM GREY · VANILLA



MUD · VANILLA



BLACK · VANILLA



RED · VANILLA

## VIGGO SMALL ONE

SIZES  
70 x 90 cm    2 ¼' x 3'







TÄLLBERG · SWEDEN



BLACK METALLIC · VANILLA



STONE METALLIC · VANILLA



NOUGAT METALLIC · VANILLA

## EIRA

**SIZES**

- 70 x 150 cm 2 ¼' x 5'
- 70 x 240 cm 2 ¼' x 8'
- 70 x 350 cm 2 ¼' x 11 ½'

METALLIC  
SHINE







WARM GREY · VANILLA



OLIVE · VANILLA



MISTY BLUE · VANILLA



BLACK · BLACK METALLIC



FOSSIL GREY · WHITE METALLIC



MUD · MUD METALLIC

## LILO

### SIZES

70 x 50 cm	2 ¼' x 1 ¾'
70 x 150 cm	2 ¼' x 5'
70 x 250 cm	2 ¼' x 8 ¼'
70 x 350 cm	2 ¼' x 11 ½'
70 x 450 cm	2 ¼' x 14 ¾'



## HUGO

### SIZES

70 x 160 cm	2 ¼' x 5 ¼'
70 x 240 cm	2 ¼' x 8'
70 x 320 cm	2 ¼' x 10 ½'
70 x 400 cm	2 ¼' x 13 ¼'

METALLIC  
SHINE







LONDON · ENGLAND



BLACK & WHITE



COLOUR

## JAMES

### SIZES

70 x 120 cm	2 ¼' x 4'
70 x 240 cm	2 ¼' x 8'
70 x 360 cm	2 ¼' x 11 ¾'





VANILLA · BLACK



BLACK · VANILLA

## LINN

**SIZES**

- |             |              |
|-------------|--------------|
| 70 x 160 cm | 2 ¼' x 5 ¼'  |
| 70 x 240 cm | 2 ¼' x 8'    |
| 70 x 360 cm | 2 ¼' x 11 ¾' |





MANHATTAN · NEW YORK



DARK BLUE · VANILLA



MUD · VANILLA



BLACK · VANILLA

## MAX

### SIZES

70 x 100 cm	2 ¼' x 3 ¾'
70 x 160 cm	2 ¼' x 5 ¼'
70 x 240 cm	2 ¼' x 8'
70 x 320 cm	2 ¼' x 10 ½'
70 x 400 cm	2 ¼' x 13 ¼'







BLACK · VANILLA



LIME · VANILLA



PALE TURQUOISE · VANILLA

## OWEN

**SIZES**

- 70 x 160 cm    2 ¼' x 5 ¼'
- 70 x 240 cm    2 ¼' x 8'
- 70 x 320 cm    2 ¼' x 10 ½'
- 70 x 400 cm    2 ¼' x 13 ¼'







TOKYO · JAPAN



CORAL RED · VANILLA



LIGHT ORANGE · VANILLA



MUD · VANILLA



BLACK · VANILLA



LIME · VANILLA

## AKI

### SIZES

- 70 x 140 cm
- 70 x 240 cm
- 70 x 335 cm
- 70 x 430 cm

- 2 ¼' x 4 ½'
- 2 ¼' x 8'
- 2 ¼' x 11'
- 2 ¼' x 14'







MUD · VANILLA



RED · VANILLA



BLACK · VANILLA

## TYRA

SIZES

70 x 120 cm

2 ¼' x 4'

DOUBLE HEMMED EDGE





KEY WEST, USA

# LISA

**SIZES**

- 70 x 90 cm
- 70 x 150 cm
- 70 x 200 cm
- 70 x 300 cm
- 70 x 400 cm

- 2 ¼' x 3'
- 2 ¼' x 5'
- 2 ¼' x 6 ½'
- 2 ¼' x 9 ¾'
- 2 ¼' x 13 ¼'



MULTI · VANILLA



PINK · VANILLA



MUD · VANILLA



BLACK · VANILLA



LIME · VANILLA





# SVEA

**SIZES**

- 70 x 50 cm
- 70 x 90 cm
- 70 x 160 cm
- 70 x 240 cm
- 70 x 320 cm
- 70 x 400 cm

- 2 ¼' x 1 ¾'
- 2 ¼' x 3'
- 2 ¼' x 5 ¼'
- 2 ¼' x 8'
- 2 ¼' x 10 ½'
- 2 ¼' x 13 ¼'

**METALLIC SHINE**



WHITE METALLIC  
WHITE



CHAMPAGNE METALLIC  
VANILLA



STONE METALLIC  
FOSSIL GREY



GREY METALLIC  
GREY



AZURBLUE METALLIC  
PALE TURQUOISE



NOUGAT METALLIC  
LIGHT NOUGAT



MUD METALLIC  
MUD



BLACK METALLIC  
BLACK



# SVEA

**SIZES**

140 x 220 cm

180 x 260 cm\*

\*tightly woven

4 ½' x 7 ¼'

6' x 8 ½'\*

\*tightly woven

**DOUBLE  
HEMMED  
EDGE**

**METALLIC  
SHINE**



WHITE METALLIC · WHITE



CHAMPAGNE METALLIC · VANILLA



STONE METALLIC · FOSSIL GREY



AZURBLUE METALLIC · PALE TURQUOISE



MUD METALLIC · MUD



NOUGAT METALLIC · LIGHT NOUGAT



GREY METALLIC · GREY



BLACK METALLIC · BLACK





MULTI · VANILLA



PINK · VANILLA



LIME · VANILLA



MUD · VANILLA



BLACK · VANILLA

# LISA

SIZE  
140 x 220 cm  
4 ½' x 7 ¼'

DOUBLE  
HEMMED  
EDGE





MUD



BLUE



MULTI

## MOLLY

SIZE  
140 x 200 cm    4 ½' x 6 ½'    DOUBLE HEMMED EDGE





CHARCOAL · VANILLA



BLACK · VANILLA



MUD · VANILLA

## BOB

SIZE

140 x 220 cm

4 ½' x 7 ¼'

DOUBLE HEMMED EDGE





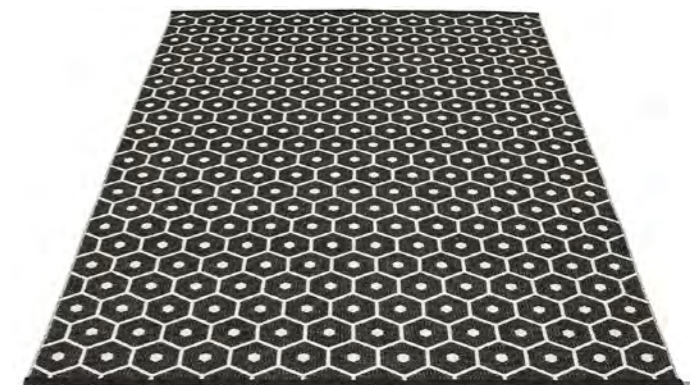
MUSTARD · VANILLA



WARM GREY · VANILLA



CHARCOAL · VANILLA



BLACK · VANILLA

## HONEY

SIZE  
180 x 260 cm    6' x 8 ½'    DOUBLE HEMMED EDGE





WHITE METALLIC · FOSSIL GREY



MUD METALLIC · MUD



BLACK METALLIC · BLACK

## HUGO

SIZE  
180 x 260 cm    6' x 8 ½'    DOUBLE HEMMED EDGE

METALLIC  
SHINE



# VIGGO STAR

SIZE  
180 x 230 cm

6' x 7 1/2'

DOUBLE  
HEMMED  
EDGE

METALLIC  
SHINE



STONE METALLIC · VANILLA



WHITE METALLIC · WHITE



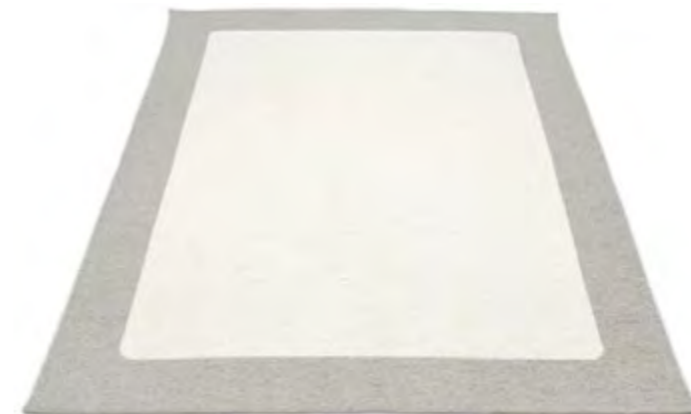
MUD METALLIC · VANILLA



BLUE METALLIC · VANILLA



BLACK METALLIC · VANILLA



WARM GREY · VANILLA



LIGHT NOUGAT · VANILLA



BLACK · VANILLA

# ILDA

SIZE  
180 x 260 cm 6' x 8 1/2' DOUBLE HEMMED EDGE





SPRING CREEK · SWITZERLAND



TURQUOISE · VANILLA



WARM GREY · VANILLA



NOUGAT · VANILLA



GREEN · VANILLA



BLACK · VANILLA



RED · VANILLA

# VERA ONE

SIZE  
180 x 230 cm

6' x 7 1/2'

DOUBLE  
HEMMED  
EDGE

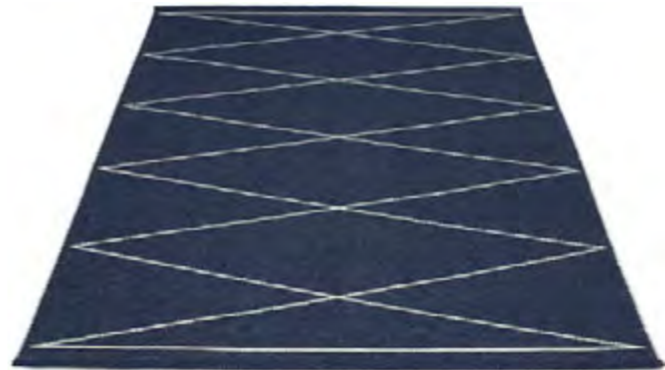




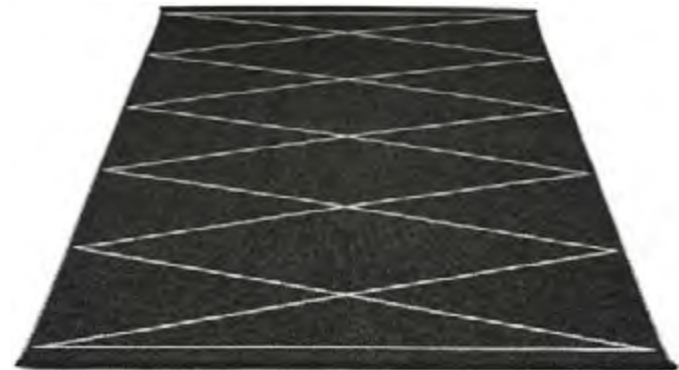
ODENSE · DENMARK



MUD · VANILLA



DARK BLUE · VANILLA



BLACK · VANILLA

## MAX

SIZE

180 x 260 cm

6' x 8 ½'

DOUBLE HEMMED EDGE





RÄTTVIK • SWEDEN

## MARRE



LIME



WARM GREY



CORAL RED



BLACK

## HONEY



LIME



WARM GREY



CORAL RED



BLACK



BACKSIDE : LIME



BACKSIDE : WARM GREY



BACKSIDE : CORAL RED



BACKSIDE : BLACK

### BAUMWOLLKISSEN

40 x 50 cm  
100% Baumwolle

Ein exklusives Baumwollkissen, made in Sweden bei Rydboholms Textil. Mit Keder und Gummietikett. Mit einem Federkissen gefüllt.

### COTTON CUSHION

40 x 50 cm 16" x 20"  
100% cotton

An exclusive cotton cushion printed in Sweden. Made with piping, rubber tag and a feather pillow inside.



**VERA**



LIME



WARM GREY



CORAL RED



BLACK



MUD

**JOEL**



MUD

**LISA**



LIME



WARM GREY



CORAL RED



BLACK



MUD

**VIVI**



MUD

**AKI**



LIME



WARM GREY



CORAL RED



BLACK



MUD

**ODD**



MUD





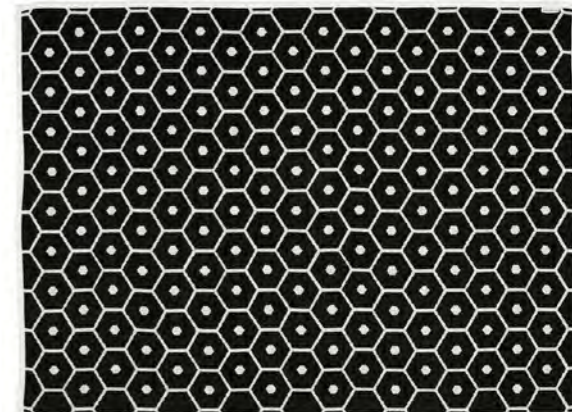
TURQUOISE · VANILLA



LEMON · VANILLA



SAND · VANILLA



BLACK · VANILLA

## HONEY

### WOLLE/BAUMWOLLDECKE

140 x 180 cm

50% wolle, 50% baumwolle

Wir haben warme Lammwolle mit weichem Baumwoll-Chenille zu einer spannenden Materialkombination vereint.

### WOOL/COTTON BLANKET

140 x 180 cm 4 ½' x 6'

50% wool, 50% cotton

We have combined warm lambswool with soft cotton chenille in a unique material combination.





## LISA



BLACK · VANILLA



OLIVE · VANILLA

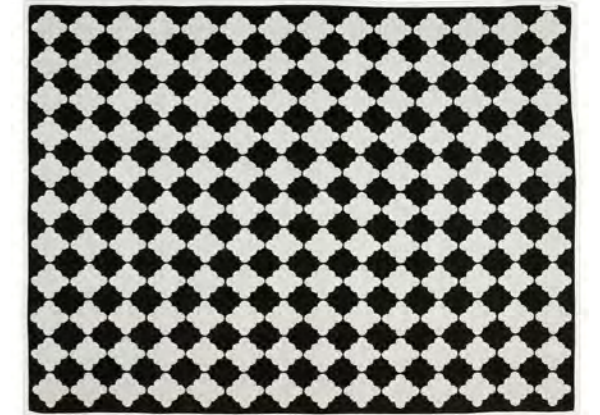


NOUGAT · VANILLA

## MARRE



SAND · VANILLA



BLACK · VANILLA

**WOLLE/BAUMWOLLDECKE**  
 140 x 180 cm  
 50% wolle, 50% baumwolle

Wir haben warme Lammwolle mit weichem Baumwoll-Chenille zu einer spannenden Materialkombination vereint.

**WOOL/COTTON BLANKET**  
 140 x 180 cm 4 ½' x 6'  
 50% wool, 50% cotton

We have combined warm lambswool with soft cotton chenille in a unique material combination.

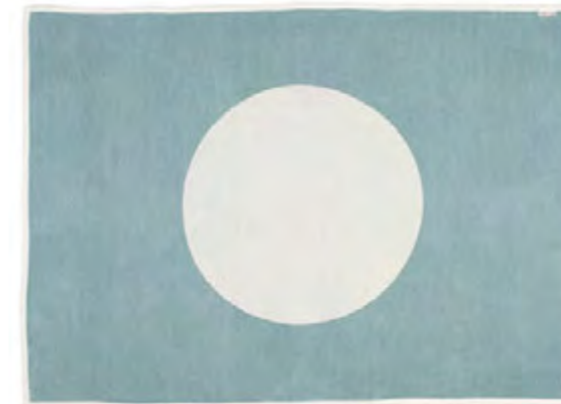




BLACK · VANILLA



OLIVE · VANILLA



TURQUOISE · VANILLA



NOUGAT · VANILLA

## VERA

### WOLLE/BAUMWOLLDECKE

140 x 180 cm

50% wolle, 50% baumwolle

Wir haben warme Lammwolle mit weichem Baumwoll-Chenille zu einer spannenden Materialkombination vereint.

### WOOL/COTTON BLANKET

140 x 180 cm 4 ½' x 6'

50% wool, 50% cotton

We have combined warm lambswool with soft cotton chenille in a unique material combination.





WHITE



WARM GREY



WHITE



WARM GREY

## SVEA

### TISCHLÄUFER

36 x 90 cm  
36 x 150 cm

Tischläufer aus Vinyl, in Italien gewebt. Bei Pappelina werden die Kanten aus rostfreiem Schwedenstahl montiert.

### TABLE RUNNER

36 x 90 cm 14" x 35"  
36 x 150 cm 14" x 59"

Vinyl table runners weaved in Italy. Swedish stainless steel edgings manually mounted by Pappelina.





## LINN



**VANILLA**  
36 x 115 cm 14" x 45"



**BLACK**  
36 x 115 cm 14" x 45"

## VERA



**BLACK**  
36 x 150 cm 14" x 59"

**TISCHLÄUFER**  
Tischläufer aus Vinyl,  
in Italien gewebt. Bei  
Pappelina werden die  
Kanten aus rostfreiem  
Schwedenstahl montiert.

**TABLE RUNNER**  
Vinyl table runners  
woven in Italy. Swedish  
stainless steel edgings  
manually mounted by  
Pappelina.





## PAPPELIGHT

Vielleicht erkennen Sie sie: Diese Leuchte war in den 60er Jahren populär. Wir haben unsere eigene Version gemacht. Der Schirm wird aus exakt dem gleichen Material gemacht wie unsere Teppiche. Die Leuchte wird in limitierter Stückzahl in Dalarna, Schweden, gefertigt. Nur in Europa erhältlich.

GRÖSSE Ø 20 cm, 33 cm hoch. Max 40 W.

Maybe you recognize it! The lamp that was popular during the 60's. We decided to do our own version. The lampshade is made out of the same kind of plastic stripes used in our rugs. Produced in a limited edition in Dalarna, Sweden. Only for the European market.

SIZE Ø 20 cm, 33 cm high. Max 40 W.

<b>A</b>	HUGO, runner .....49	MOLLY, wide rug .....71	VERA, table runner .....97
AKI, cotton cushion .....86	HUGO, wide rug .....77	MONO .....17	VERA ONE .....81
AKI, runner .....59	<b>I</b>	<b>N</b>	VERA SMALL ONE .....31
ANTS .....11	ILDA .....79	NOA .....13	VIGGO .....41
ASTA .....9	<b>J</b>	<b>O</b>	VIGGO ONE .....42
<b>B</b>	JAMES .....51	ODD, cotton cushion .....87	VIGGO SMALL ONE .....45
BOB, runner .....33	JOEL, cotton cushion .....87	ODD, runner .....35	VIGGO STAR, runner .....43
BOB, wide rug .....73	<b>L</b>	OWEN .....57	VIGGO STAR, wide rug .....78
<b>D</b>	LINN, runner .....53	<b>P</b>	VIVI, cotton cushion .....87
DUO .....19	LINN, table runner .....97	PAPPELIGHT .....98	VIVI, runner .....39
<b>E</b>	LISA, cotton cushion .....86	<b>S</b>	
EIRA .....47	LISA, blanket .....91	SVEA, runner .....65	
ELLA .....37	LISA, runner .....63	SVEA, table runner .....95	
<b>F</b>	LISA, wide rug .....69	SVEA, wide rug .....66	
FOLKE .....15	LILO .....48	<b>T</b>	
<b>H</b>	<b>M</b>	TYRA .....61	
HONEY, cotton cushion .....85	MARRE, cotton cushion .....85	<b>V</b>	
HONEY, blanket .....89	MARRE, blanket .....91	VERA, cotton cushion .....86	
HONEY, runner .....23	MARRE, runner .....21	VERA, blanket .....93	
HONEY, wide rug .....75	MAX, runner .....55	VERA, runner .....27	
	MAX, wide rug .....83		
	MOLLY, runner .....25		

**TWO-IN-ONE**  
Rugs with this symbol are reversible, opposite pattern on the other side.



Please note that colours in photos may vary slightly in tint or shade from the actual rug due to uncontrollable variations in printing.

### CARE INSTRUCTIONS RUG



- Hand or machine wash cold, 85F.
- No spin and no tumble dry.
- Do not wreck the welded edges.
- If necessary, shape by stretching in wet condition. Preferably dry flat. If hung please use a wide bar.
- Rinse off ketchup immediately, do not rub!

Use an appropriate sized washing machine. Rule of thumb is max 70 x 250 cm rug for a 6 kg washing machine.

### CARE INSTRUCTIONS TABLE RUNNER

- Rinse in warm water or wipe with a wet cloth.
- No machine wash.
- Do not wring the fabric.
- Do not iron the fabric.
- Rinse off ketchup immediately, do not rub!



### CARE INSTRUCTIONS BLANKET

- Hand wash or dry clean.
- No spin and no tumble dry.
- Shrinkage 0-4%.
- Iron, medium.



Please allow ±4% variation in size due to factors involved in producing the rugs and blankets.

### CARE INSTRUCTIONS CUSHION

- Machine wash warm/105F.
- Black cushion: machine wash hot/140F.
- Light spin.
- No tumble dry.
- Shrinkage 0-3%.
- Wash inside out.
- Iron on reverse.



### MATCHING PRODUCTS

Please be aware that colours appear differently in different materials.

### ENVIRONMENTAL CONCERN

Our rugs do not contain hazardous metals or hazardous softeners. Our products have long life and also requires minimal maintenance. We follow all rules and requirements in Sweden and according to REACH, a regulation of the EU.

For more information, please visit [www.pappelina.com](http://www.pappelina.com)



www.pappelina.com